

# ras

## SUPPLY CHAIN INTEGRITY

ASSET FOCUSED • SOLUTION BASED • RELATIONSHIP LED

### LOAD ADHERENCE & MARSHALLING



### PROVEN RESULTS WITH RAS 'LA & MARSHALLING'

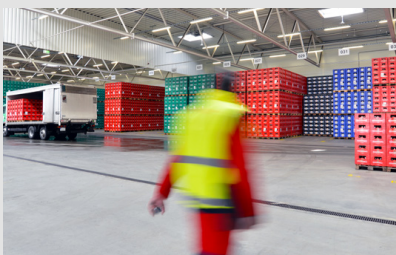
**Employing intelligent processes to take the unknown out of the supply chain...**

Often the focus on stock accuracy and impact to store is directed at despatch, however, our data shows left-off's, mismarshall or misguided delivery units cause a higher level of negative impact to store stock file than picker accuracy...

At RAS we provide Load Adherence checks on equipment/ media count or compliance audits on randomly selected vehicle

loads, to ensure the right pallet/ cage has been loaded on the right vehicle and select criteria has been met.

Our audits across all industries highlight an average marshallling error rate of almost 1%. By adding our LA and Marshalling audits, improvements of over 50% can be realised within the first 3 months.



### THE LA PRINCIPLE

- 01** To sample check complete vehicle loads by DU.
- 02** To identify and resolve inaccuracies, dwell time and misguided DU's.
- 03** To identify and resolve inaccuracies and 'shrink' occurrences.



**CUSTOM  
SOLUTION  
APPROACH**



**EFFICIENT  
EFFECTIVE**



**RETAILER/3PL  
RELATIONSHIP  
FOCUSED**

Registered Office: 1 Elmfield Park, Bromley BR1 1LU | Registered in England & Wales 11279390  
0800 282 382 | [enquiries@retailassetsolutions.com](mailto:enquiries@retailassetsolutions.com) | [www.retailassetsolutions.com](http://www.retailassetsolutions.com)



# ras | SUPPLY CHAIN INTEGRITY

## THE LA & MARSHALLING PROVISION

- Auditors will select vehicles for checking and conduct a delivery unit check, matching the despatch note to what is on the vehicle.
- Validation of vehicles being loaded safely to prevent accidents and ensure case integrity throughout the journey.
- Can be combined with pick accuracy audits, using the same audit team.
- Can be further enhanced with our RAS Tracca technology.
- Assurance of a recognised programme.

RAS Supply Chain has built a strong relationship with Morrisons by embedding their auditing services into our operation. RAS provide flexibility and always look to continually improve processes.

Amanpal Uppal  
Wm Morrisons Supermarkets

## A RAS LA & Marshalling provides significant benefits:



**Faster** delivery turnaround with drop and go at store due to greater assurance.



**Reduced** inaccuracies and 'shrink' and left offs.



**Increased** product availability in store.



**Validated** level of accuracy.



**Highlights** root causes and error reasons before despatch.



**Management** information through a clear and concise dashboard.

Secure, efficient and accurate supply chain management; **delivered.**

ASSET FOCUSED • SOLUTION BASED • RELATIONSHIP LED

WWW.RETAILASSETSOLUTIONS.COM • 0800 282 382